



# Sonora



© All You Knit is Love.  
For any questions, contact us at [info@allyouknitislove.com](mailto:info@allyouknitislove.com).  
*#sonora #sonorashawl #allyouknitislove*



# Sonora

**Sonora** is the name of the desert where I was born and the inspiration for this shawl. Even though I have been a city dweller for many years now, the desert, with its wide open skies and incredible wildlife, make me feel in balance and centered. The pods hanging from mesquite trees and the skeletons of Cholla cactus make up the lace sections, while the edging brings to mind the beautiful Santa Catalina mountains that always show me which way is north.



## Materials

Murmur by All You Knit is Love (75% merino 25% cashmere, 400m/100g) ñ 1 skein

4.0mm circular needles

Stitch marker to indicate center stitch

Yarn needle to weave in ends

## Gauge


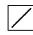
21 stitches and 30 rows = 10 x 10cm in Stst on 4mm needles (lightly blocked)

## Measurements

170 cm wide x 68 cm tall

## Chart notes

Odd rows are read from right to left and even rows from left to right.

The charts show one half of the triangle. Work from the beginning of the charted row to the end, work the center stitch, and then work back the other way, reversing the shaping (ie  become  and vice versa).

Where no even rows are shown, they are worked as follows: k3, purl to the last 3 sts, k3

The center stitch is always knit on the right side and purled on the wrong side.



# Sonora

## Instructions

### Garter tab start

CO 3sts

Knit 14 rows

**K3, pick up and knit 7sts along the edge (1 stitch in each garter bump), pick up and knit 3 sts from cast on edge**

**K3, p4, pm, p3, k3 (13 sts)**

### Stockinette stitch section

**1) k3, yo, knit to marker, yo, sm, *k1*, yo, knit to last 3 sts, yo, k3**

**2) k3, purl to last 3 sts, k3**

**Work rows 1) and 2) a total of 23 times. (105 sts)**

### Mesquite Pods section

**Work Mesquite Pods chart A once (145sts)**

**Work rows 1 & 2 of the Stockinette section 3 times (157sts)**

**Work Mesquite Pods chart B once (197 sts)**

**Work rows 1 & 2 of the Stockinette section 4 times (213sts)**

**Work 4 rows in garter stitch as follows:**

**1) k3, yo, knit to marker, yo, sm, *k1*, yo, knit to last 3 sts, yo, k3**

**2) knit to 1 stitch before marker, *p1*, sm, knit to end**

**3) k3, yo, knit to marker, yo, sm, *k1*, yo, knit to last 3 sts, yo, k3**

**4) knit to 1 stitch before marker, *p1*, sm, knit to end (221sts)**

### Cholla section

**Work Cholla chart twice (253sts)**

### Edging section

**Work Edging chart once (273sts)**

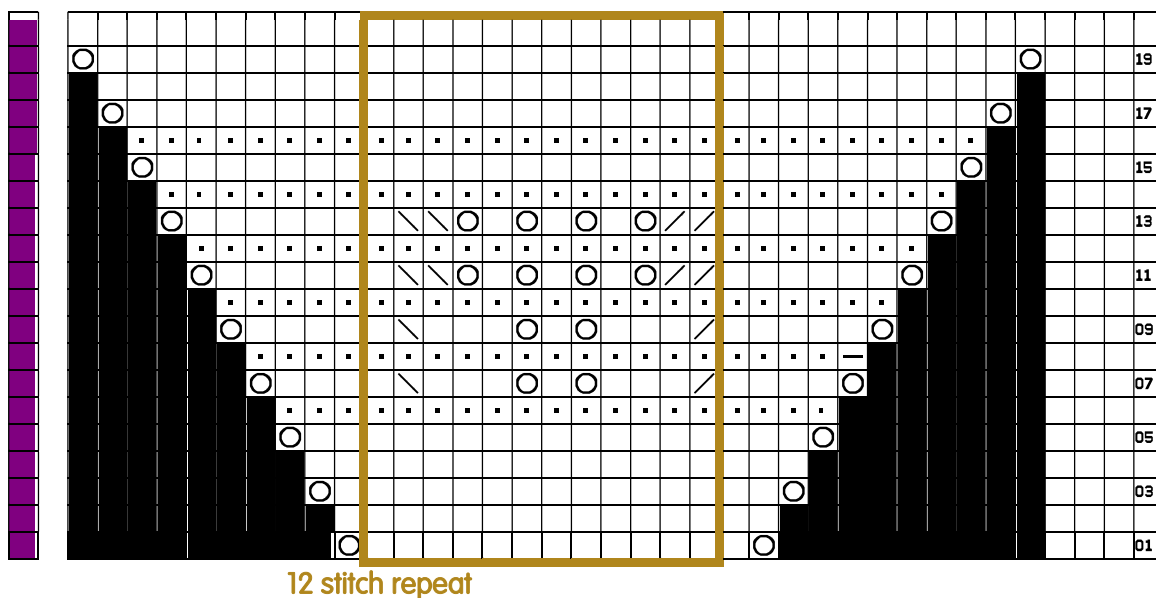
## Finishing

**Weave in ends. Soak the shawl in warm water, roll in a towel to remove any excess moisture and then block.**

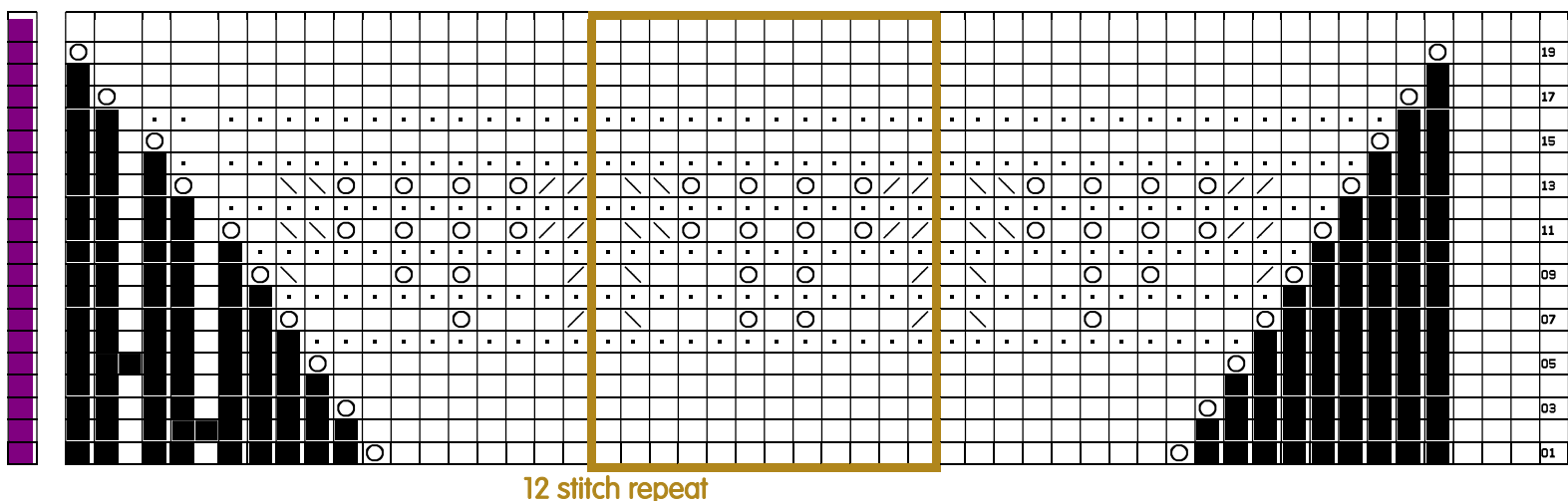


# Sonora

## Mesquite Pods Chart A



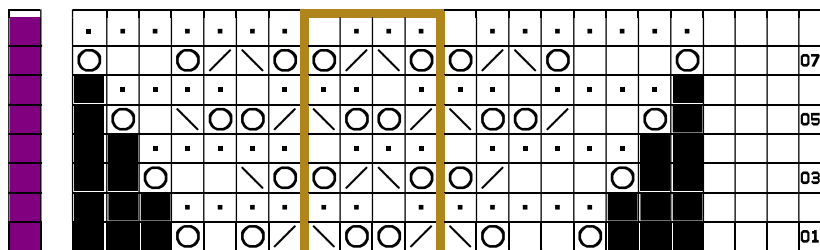
## Mesquite Pods Chart B





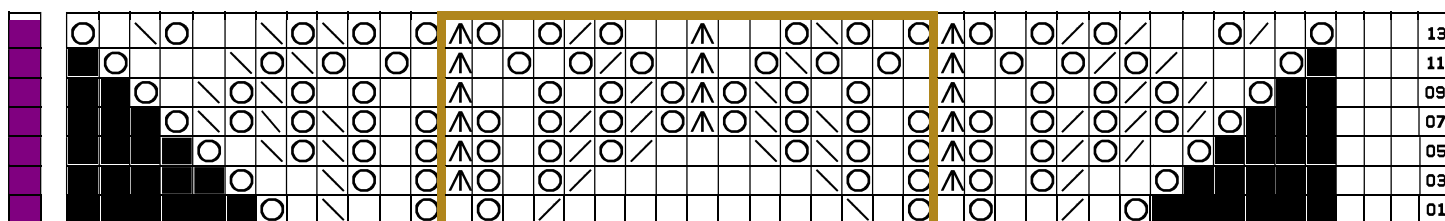
# Sonora

## Cholla Chart



4 stitch repeat

## Edging Chart



16 stitch repeat

## Abbreviations and key

**CO** = cast on

**k** = knit

**p** = purl

**yo** = yarn over

**pm** = place marker

**sm** = slip marker

= knit

= purl

= yarn over

= k2tog – knit 2 stitches together

= ssk – slip 1 stitch knitwise, slip 1 stitch purlwise, go into the front of the slipped stitches with the left needle and knit the 2 stitches together

= centered double decrease – slip 2 sts together knitwise, k1, pass slipped stitches over knit stitch

= center stitch (always knit is Stst)

(Charts prepared using Kauri font.)

© All You Knit is Love.

For any questions, contact us at [info@allyouknitishlove.com](mailto:info@allyouknitishlove.com).

#sonora #sonorashawl #allyouknitishlove



# Sonora